

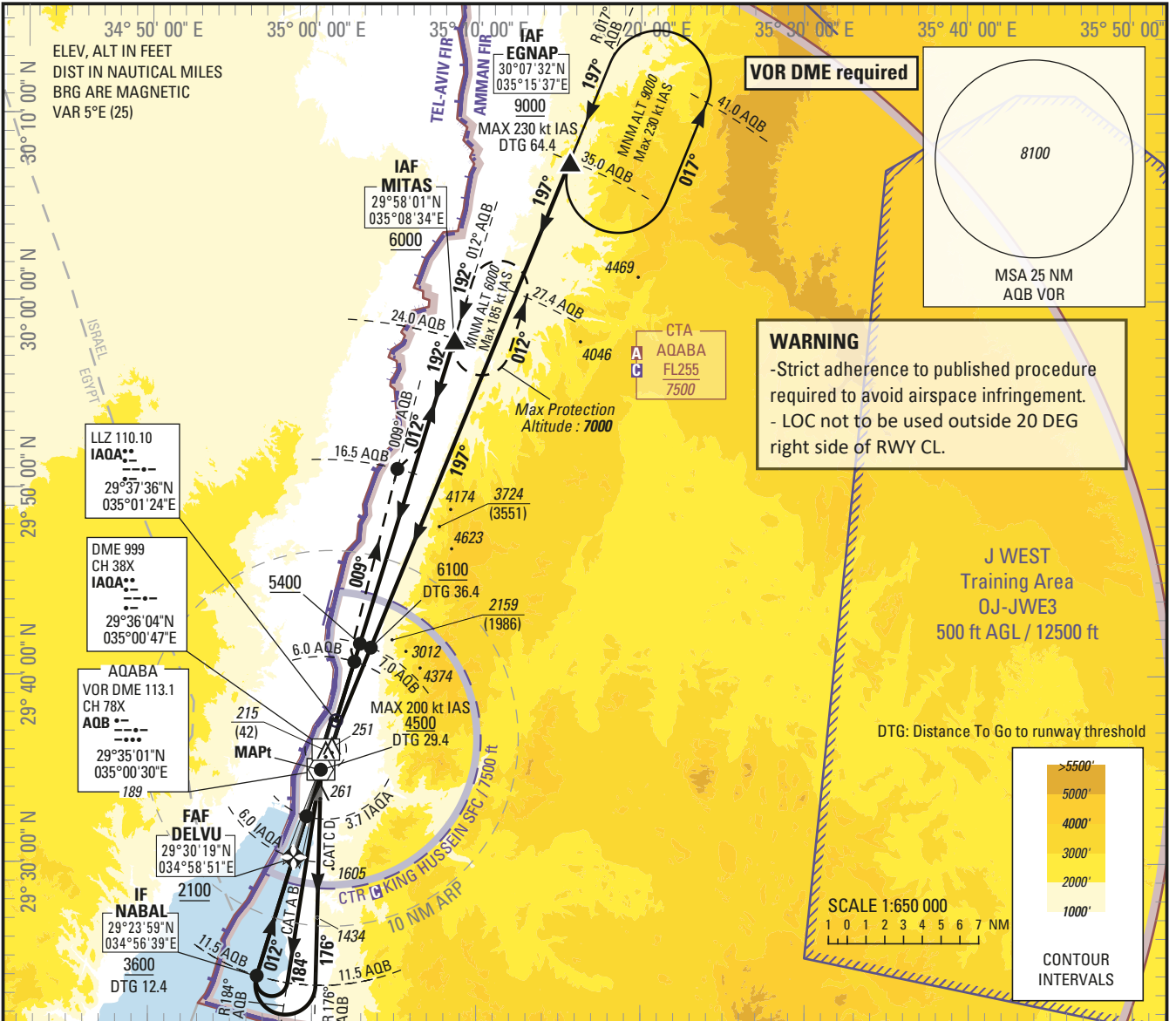
**INSTRUMENT  
APPROACH  
CHART — ICAO**

**AERODROME ELEV 173 ft**  
HEIGHTS RELATED TO  
THR RWY 01 — ELEV 173 ft

**AQABA/King Hussein Intl. (OJAQ)**

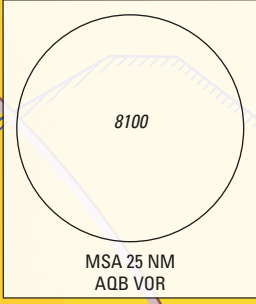
King Hussein Tower 119.2  
Aqaba Sector 132.425

**ILS Y RWY 01**



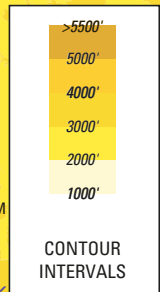
**VOR DME required**

**WARNING**  
-Strict adherence to published procedure required to avoid airspace infringement.  
- LOC not to be used outside 20 DEG right side of RWY CL.



**J WEST Training Area OJ-JWE3**  
500 ft AGL / 12500 ft

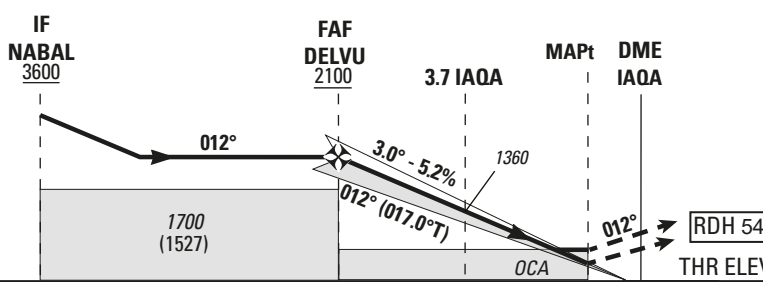
SCALE 1:650 000  
1 0 1 2 3 4 5 6 7 NM



5	4	3	2	IAQA	NM to DME
1780	1450	1130	810		ALTITUDE

**TRANSITION ALTITUDE 13000**  
**TRANSITION LEVEL FL 150**

CHANGE: New IFF procedure



**MISSED APPROACH:**  
Climb on course **012°M**. At **6.0 AQB**, turn **left** to intercept and follow **R 009° AQB (009°M)** (Max 230 kt IAS).  
At **16.5 AQB**, turn **right** to intercept and follow **R 012° AQB (012°M)**, climbing to **6000 (5827)** to enter in the holding (Max 185 kt IAS) or follow ATC instructions.  
If unable to reach holding altitude, continue to climb in the holding.

12.6	6.0	3.7	1.1	0
12.4	5.8	3.5	0.9	0

NM to IAQA DME  
NM to THR RWY 01

<b>(1) OCA (H)</b>		A	B	C	D/DL	<b>(1) For additional minima, see OJAQ AD 2.24.8-X2.</b>									
Straight-in Approach	Cat I 2.5%	<b>1390 (1220)</b>	<b>1410 (1230)</b>	<b>1410 (1240)</b>	<b>1420 (1250)</b>	<b>GS</b>	kt	70	85	100	115	130	145	160	185
	GP INOP 2.5%	<b>1700 (1530)</b>	<b>1720 (1550)</b>	<b>1750 (1580)</b>	<b>1770 (1600)</b>	-	FAF-MAPT 4.9 NM	min:s	<b>4:11</b>	<b>3:27</b>	<b>2:56</b>	<b>2:33</b>	<b>2:15</b>	<b>2:01</b>	<b>1:50</b>
Circling		<b>Not authorized</b>				Rate of descent	ft/min	<b>370</b>	<b>450</b>	<b>530</b>	<b>610</b>	<b>690</b>	<b>770</b>	<b>850</b>	<b>980</b>



## INSTRUCTIONS

AQABA/King Hussein Intl. (OJAQ)

ILS Y RWY 01 Minima

**Minima ILS CAT I**

The standard ILS CAT I Minima below are determined for ACFT performing an ILS CAT I procedure which are able to maintain a climbing slope greater than 2.5% during a missed APCH.

<b><i>Slope in missed approach</i></b>	<b><i>OCA (H)</i></b>			
	A	B	C	D/DL
<b>3.0%</b>	<b>1080</b> (910)	<b>1090</b> (920)	<b>1100</b> (930)	<b>1110</b> (940)
<b>4.0%</b>	<b>570</b> (390)	<b>580</b> (410)	<b>590</b> (410)	<b>600</b> (430)
<b>5.0%</b>	<b>380</b> (200)			<b>380</b> (210)

**Minima GP INOP**

The standard GP INOP Minima below are determined for ACFT performing a GP INOP procedure which are able to maintain a climbing slope greater than 2.5% during a missed APCH.

<b><i>Slope in missed approach</i></b>	<b><i>OCA (H)</i></b>			
	A	B	C	D
<b>3.0%</b>	<b>1290</b> (1120)	<b>1320</b> (1150)	<b>1350</b> (1180)	<b>1380</b> (1200)
<b>4.0%</b>	<b>520</b> (350)	<b>540</b> (370)	<b>580</b> (410)	<b>620</b> (440)
<b>5.0%</b>	<b>520</b> (350)			

CHANGE: New IFP procedure

